



**SAPEC AFRICA (PTY) LTD**

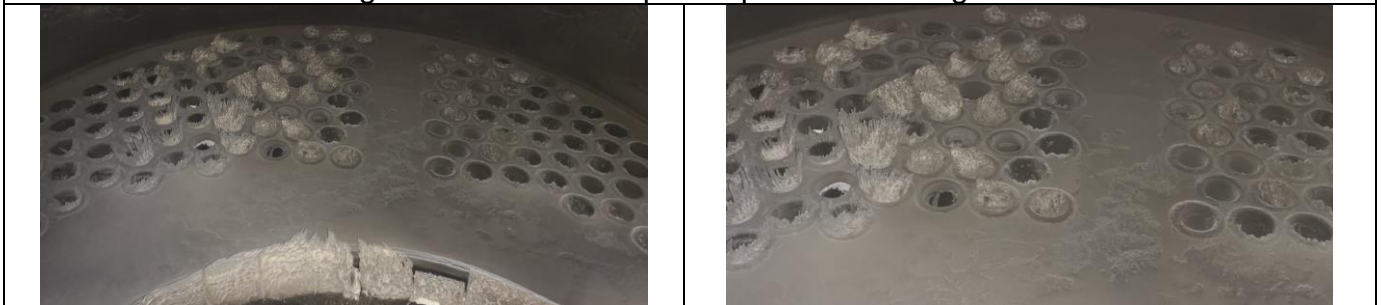
*Client Report example for Paper & pulp category*

**RE: BOILER FIRE SIDE PHOTOGRAPHIC REPORT BOILER NO 6  
AFTER 12 MONTHS CONTINUOUS OPERATION**

The following photographs taken on the 24/08/20 indicate the condition of heat transfer surfaces



Frontal of Left and right smoke boxes. Opened prior to cleaning



**SAPEC AFRICA (PTY) LIMITED**

Physical Address: 164 Maroela Street, Doringkloof, Centurion 0157

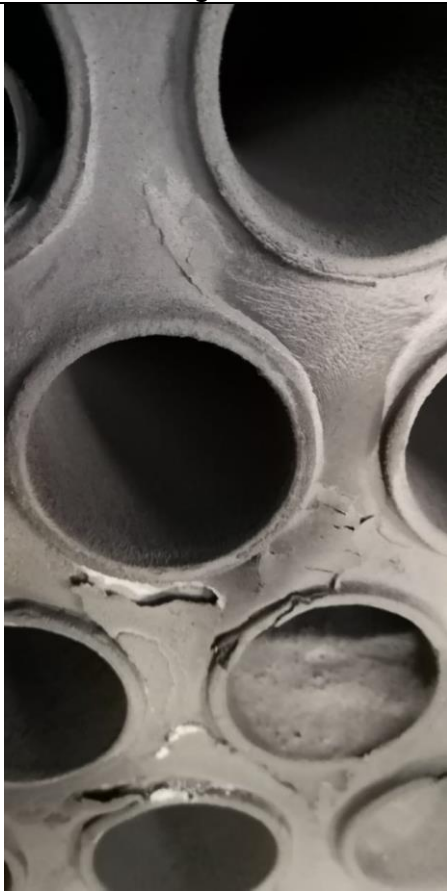
Telephone: (011) 966 8103 Fax: (086) 563 5129 Email: sales@sapac.co.za

Postal Address: P.O.Box 11979, Die Hoewes 0163.

Left hand reversal chamber with sootblower issue



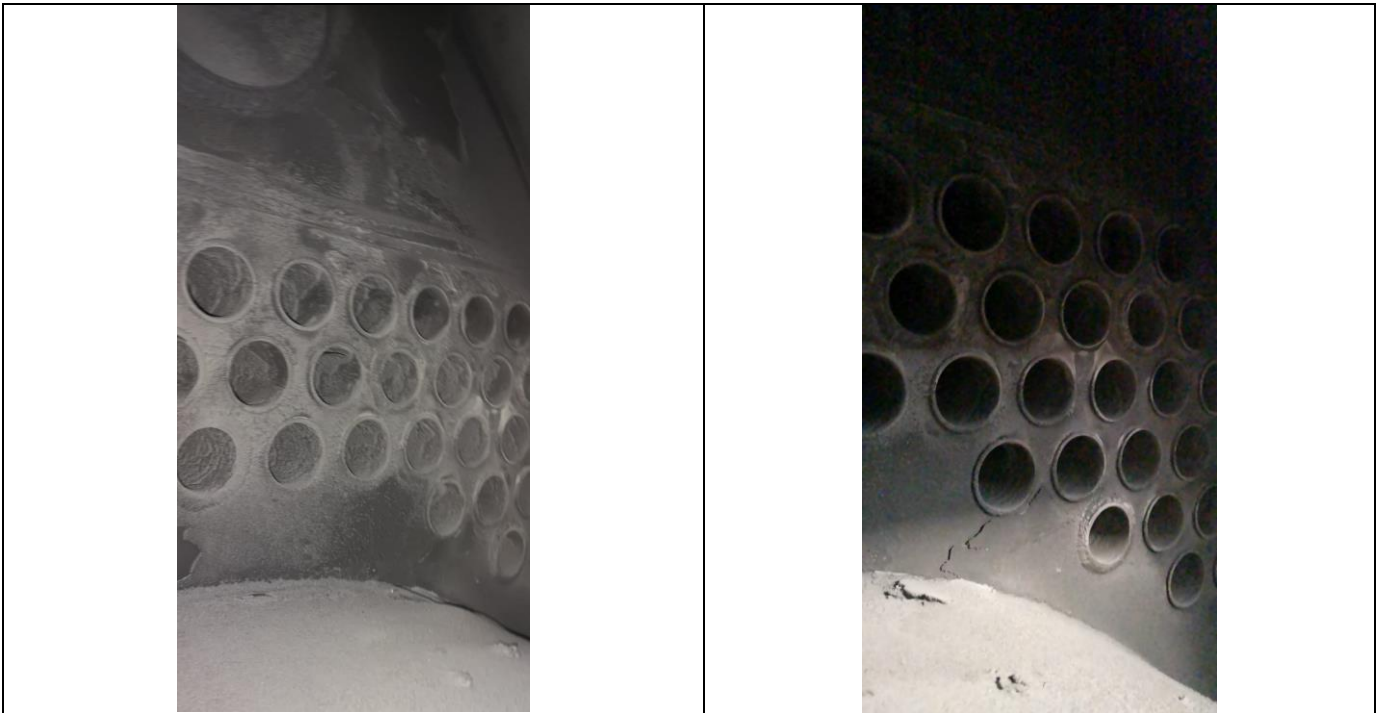
Right Hand Reversal chamber clear after 1 year operation



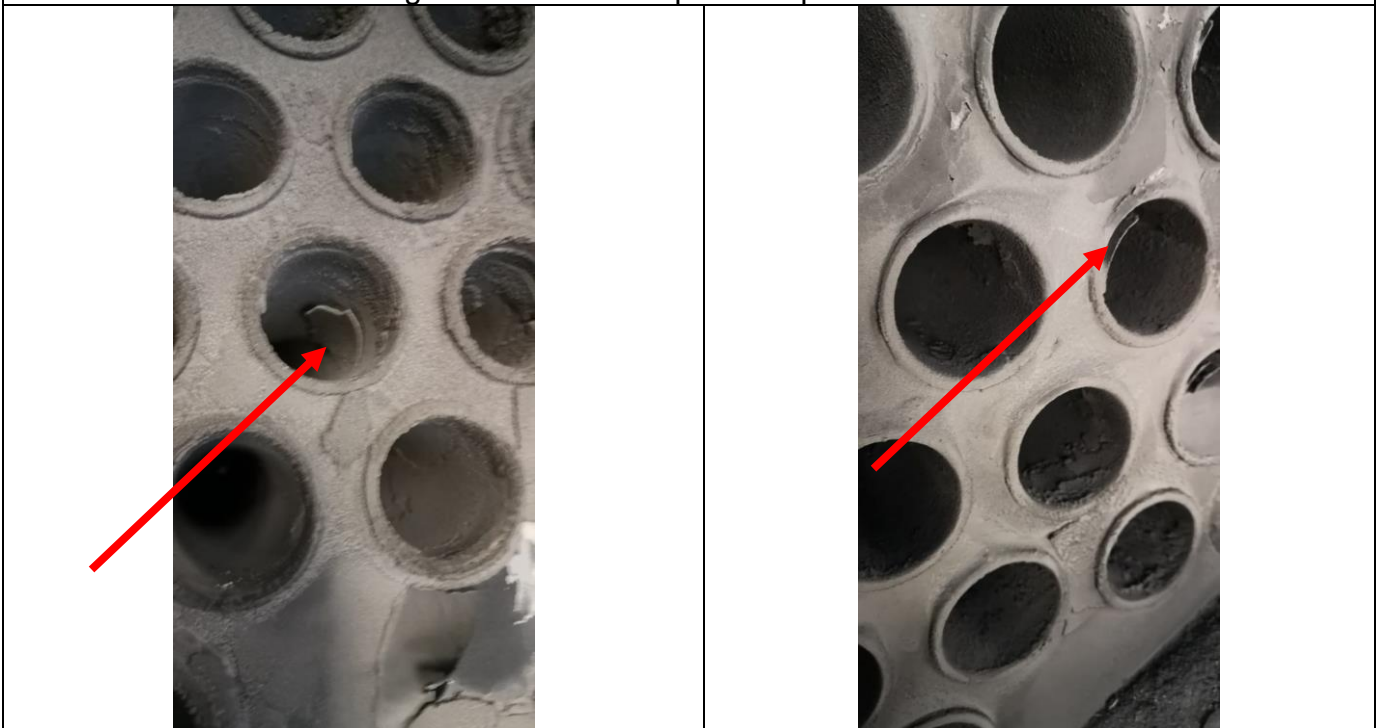
Second pass tubes with evidence of deposition peeling of metal surface



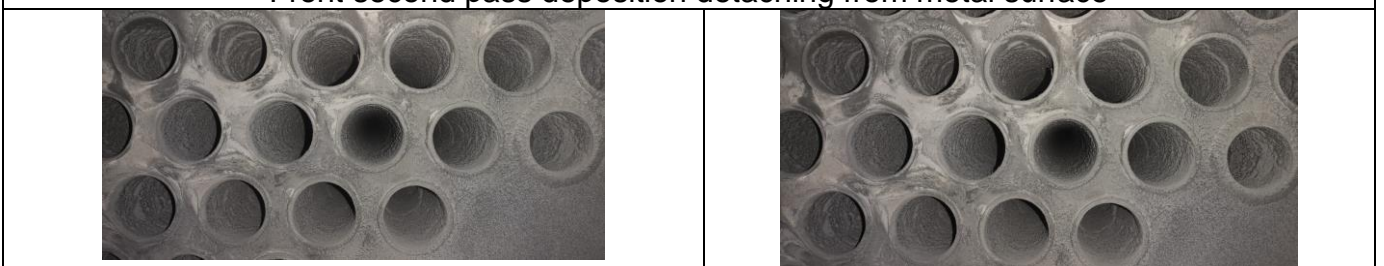
Right hand rear third pass



Right hand rear third pass. Deposition is soft

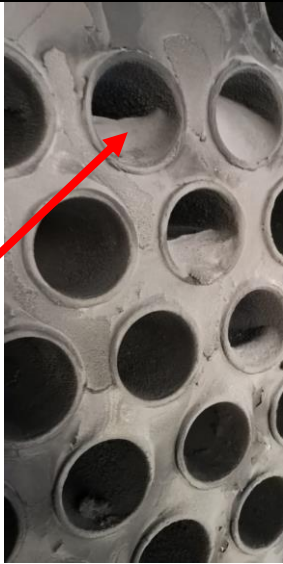


Front second pass deposition detaching from metal surface

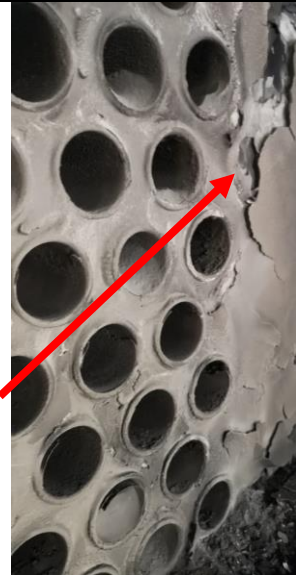


Closeup of front second pass shows excellent state of the Boiler after 1 year of operation





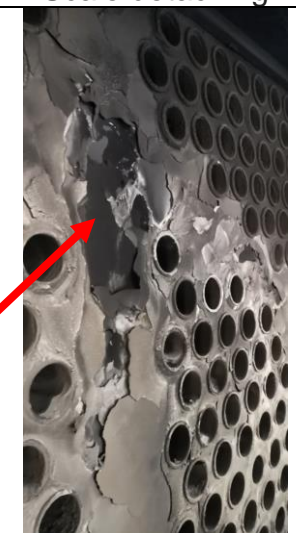
Ash build-up of more complete combustion



Front tube plate shows deposition detaching from metal



Scale detaching



Tube plate clearly shows scale detachment

## Conclusion and Recommendation

Both Boiler no 1 and 6 has operated continuously for a period of 1 year with excellent performance and has cleaned easily within the span of 5 days. Information from BMCS, the Boiler cleaning contractors.

As can clearly be seen the SAPEC provides excellent cost performance and Boiler availability. We do however have to bring under your attention that the Boiler house is a dynamic place and that the monitoring and dosing of the system does require daily input from *Client*.

If you need more information, please feel free to contact me direction.

Yours sincerely

A handwritten signature in black ink, appearing to read 'Paul Combrink', written over a light blue rectangular background.

Paul Combrink  
Director